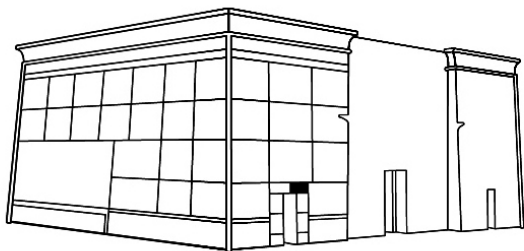


Sobek (Shemanefer),

Nebtuwi,

Neith,

The King



Drawing showing location of this scene at Esna temple, wall West exterior

TITRE : ( ← ) | 1 | 2 | 3 |

The King LE ROI : ( ← ) | 4 | 5 |

Behind him Derrière lui : |

NEITH : ( → ) | 6 | 7 | 8 |

| 9 | (?) |

Nebtuwi NEBTOU : ( → ) | 10 | 11 |

Sobek (Shemanefer) CHEMÂNEFER : ( → ) | 12 | 13 | 14 |



Drawing and Hieroglyphs from:

Serge Sauneron, Jochen Hallof (ed.)  
The temple of Esna (Esna VII)  
2009 IFAO

Nebtuwi is wife of Khnum, her cult center is at Esna (Latopolis).  
Sobek, son of Neith, is called Shemanefer at the temple of Esna.  
In addition to a name change, he gains new crowns and roles.