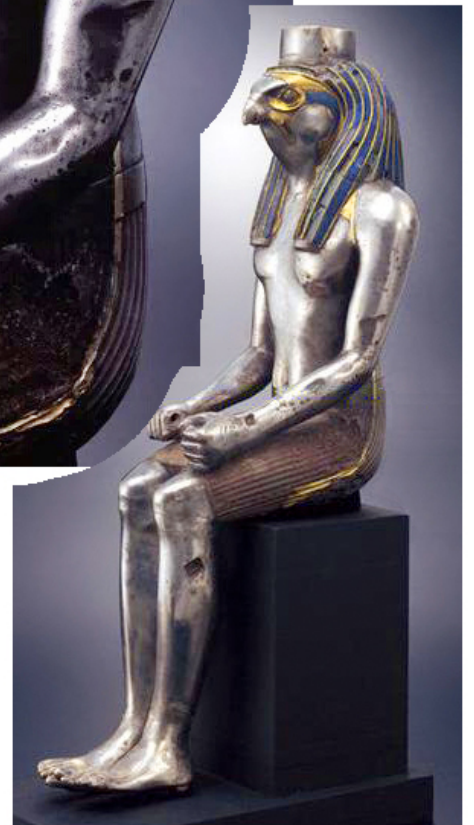


Horus statue at
Miho museum:



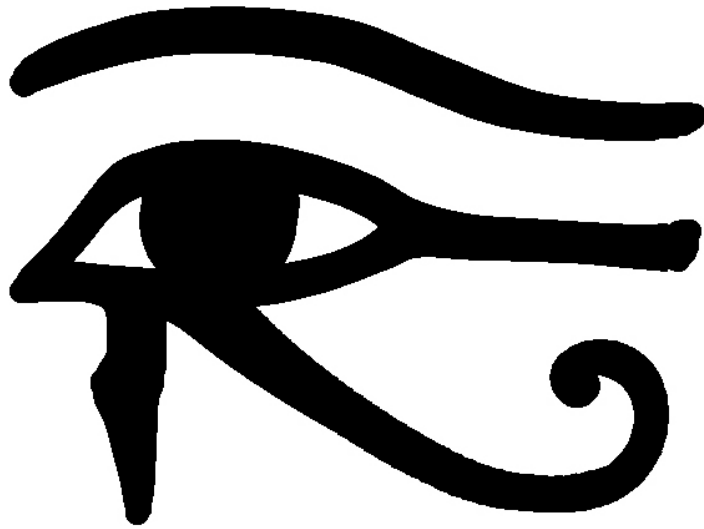


www.mfa.org/collections/object/lower-part-of-seated-statue-of-king-menkaure-mycerinus-138426

"The sema hieroglyph represents two lungs attached to the trachea, an anatomical unit which provided a natural symbol for the concept of the unification of equal parts, and particularly, the unification of the two kingdoms of Upper and Lower Egypt. The union of the Two Lands stood behind much of the ritual and ideology of Egyptian kingship, and the sema hieroglyph is found in a wide range of contexts which underscored the king's uniting rule."

Quote and illustrations from Reading Egyptian Art
by Richard Wilkinson, pages 80-81

One of Horus' titles is "Heru-sema-tawy", "Horus, Uniter of the Two Lands", so this is a fitting thing to grace the throne of a statue of Horus.



Heru-Wer
(Great
Horus)